



## UNFORGETTABLE IRELAND JOURNEYS (TOUR CODE: 15093)

### STARTS AND ENDS

in Dublin

### TRAVEL PERIODS

07 Apr 26 - 13 Oct 26

### EXPERIENCE

Group Journeys  
Cultural

### TRAVEL STYLE

Escorted Group Tour

Experience the best of Ireland on this enchanting journey from Dublin to Galway and beyond. Explore historic castles, dramatic coastlines, vibrant cities, and breathtaking landscapes, while enjoying authentic Irish culture, warm hospitality, and hand-picked hotel stays.

### Highlights

- **Group of maximum 35 people**
- **Guaranteed Departures**
- **Kiss the Blarney Stone** at iconic Blarney Castle, then shop Irish crafts at Blarney Woollen Mills.
- **Explore the stunning Ring of Kerry**, with mountain views, lakes, and a live sheepdog demo on a local farm
- Visit the dramatic **Cliffs of Moher** and the unique limestone terrain of the **Burren Region**.
- Relax on a scenic **cruise through Galway's spectacular waterways**
- Discover the charm of **Dublin**, Ireland's capital, from its elegant Georgian squares and historic cathedrals to the immersive **EPIC Emigration Museum**

Discover the charm, beauty, and spirit of Ireland on this carefully crafted journey through its most iconic regions. Begin in the lively capital of Dublin before travelling through enchanting landscapes, historic castles, and vibrant towns. From the legendary Blarney Castle and the dramatic Cliffs of Moher to the wild romance of Connemara and the cultural heartbeat of Galway, each day brings new highlights steeped in history, folklore, and natural wonder. Along the way, enjoy authentic Irish experiences – from traditional farm life and scenic cruises to the warmth of local pubs and lively evenings of music and dance. This unforgettable tour offers the perfect blend of sightseeing, culture, and relaxation, with comfortable stays in hand-picked hotels throughout.



GUARANTEED  
DEPARTURES



VARIED GROUP  
SIZES



SUSTAINABLE  
TRAVEL



ENGLISH-ONLY  
EXPERT GUIDES



HANDPICKED  
CENTRAL HOTELS



AUTHENTIC  
EXPERIENCES



✓ ENTIRE Cooling-Off Period

✓ ENTIRE Change of Mind

✓ ENTIRE On Ground Support

✓ ENTIRE AUD Prices

✓ ENTIRE Industry Accredited

✓ ENTIRE Australian Owned

## INCLUSIONS

- 2 nights in Dublin at Academy Plaza Hotel - 4\* or similar
- 2 nights in Kerry at Randles Hotel Killarney - 4\* or similar
- 2 nights in Galway at Salthill Hotel - 4\* or similar
- 1 night in Limerick at The George Hotel - 4\* or similar
- Modern motor-coach for days 2-7
- Daily Breakfast
- Dinner at the hotel (Days 1 & 5)
- Visit to Blarney Castle & Sheepdog Demonstration
- Visit to the Cliffs of Moher
- Tarbert to Killimer Ferry crossing
- Visit to Galway Cathedral with a cruise along Lough Corrib
- Visit to Kylemore Abbey & Dan O'Hara Homestead
- Entry to EPIC The Irish Emigration Museum
- English-speaking driver/guide

## ITINERARY

Day **1**

### Dublin

Welcome to Ireland! Upon arrival at Dublin Airport, make your own way to your centrally located hotel.

The rest of the day is yours to explore the vibrant city of Dublin at your leisure.

In the evening, return to the hotel for a welcome drink and a chance to meet your fellow travellers before enjoying dinner.

Overnight stay in Dublin at **Academy Plaza Hotel** or similar.

Dinner



Day **2** Dublin Kerry

After breakfast, meet your driver and English-speaking tour guide before departing for **County Kerry**.

Along the way, stop at the historic **Blarney Castle and Estate**. Set within over 60 acres of picturesque parkland, the castle is surrounded by rare and unusual plants and trees, and steeped in centuries of history. Visitors can try their luck at gaining the legendary "gift of the gab" by kissing the famous Blarney Stone.

Afterwards, enjoy some time browsing at **Blarney Woollen Mills**. During the Great Famine, the mill provided vital employment to locals, helping shield the village from its worst effects. In 1976, a former mill worker, Chris Kelleher, purchased the property and transformed it into what is now one of Ireland's largest and most renowned craft shops.

Overnight stay in Kerry at **Randles Hotel Killarney** or similar.

Breakfast



Day **3** Kerry Ring of Kerry

Today, enjoy a **scenic tour of the Iveragh Peninsula, exploring the famous Ring of Kerry.**

Travel through breathtaking landscapes of mountains, peat bogs, lakes, and sweeping views of the Atlantic Ocean. Depart from Killarney and pass through Killorglin, known for its traditional Puck Fair, then continue to Glenbeigh for panoramic views of the Dingle Peninsula.

Visit the charming seaside town of Waterville, followed by Sneem, noted for its colourful houses and village charm. On your return to Killarney, stop at a local farm for a sheepdog demonstration, where a farmer and his border collies showcase the skill of herding sheep from the mountains to the pen.

You can enjoy a *different mode of transport with a Jaunting Car ride* through Killarney National Park. This pony and trap experience offers a unique way to discover areas of the park that are otherwise difficult to access. (not included- *Extra cost applies*).

This evening, dine at your leisure in one of Killarney's many restaurants or traditional pubs (not included).

Overnight stay in Kerry at **Randles Hotel Killarney** or similar.

Breakfast



## Day 4 Kerry Cliffs of Moher Limerick

After breakfast, check out of your hotel and **begin your journey north to County Clare.**

Travel to Tarbert and enjoy a short ferry ride across the mouth of the River Shannon to Killimer. Continue along the scenic coastline to the **Cliffs of Moher**, Ireland's most majestic cliffs, rising dramatically from the Atlantic Ocean and stretching over 7 kilometres. On a clear day, you may catch views of the Aran Islands and the Connemara Mountains.

Enjoy a guided tour of the **Burren Region**, a unique limestone plateau in northern County Clare, known for its striking geological features and rare flora.

This evening, you may choose to attend **an optional Medieval Banquet at Bunratty Castle** (*additional cost applies*). Built in the 15th century by the Earl of Thomond, Bunratty Castle stands proudly on the banks of the Raithe River. The Earl was famed for his hospitality and grand banquets. Today, the tradition continues with a lively mead reception, a four-course feast, and entertainment by the renowned Bunratty Singers—a memorable way to end the day.

Overnight in Limerick at **The George Hotel** or similar.

Breakfast



THE BURREN

Day **5** Limerick Galway

Today, travel to Galway City, renowned for its vibrant lifestyle and numerous festivals, celebrations, and events. Stroll down Shop Street – a charming pedestrianised street which is the cultural heartbeat of Galway City. The main squares in the city are Eyre Square (containing John F. Kennedy Park) and Spanish Parade next to the Spanish Arch. Visit Galway Cathedral, one of the largest and most impressive buildings in Galway built between 1958 and 1965.

Later, enjoy a cruise along Lough Corrib, including scones and an Irish coffee. This journey on the Corrib Princess takes passengers along the majestic Lough Corrib and onto the lake. Visitors will see unsurpassed views of the historic monuments and natural amenities that make this one of the most spectacular waterways in Ireland.

Overnight stay in Galway at **Salthill Hotel** or similar.

Breakfast, Dinner



GALWAY

Day **6** Galway Connemara Galway

Today visit Connemara, a land of lakes and rivers, bogs and mountains. A land of small villages where Gaelic is still the spoken language, and little has changed since the beginning of time. It is undoubtedly the wildest and the most romantic part of Ireland. Visit Kylemore Abbey, built in 1868 by Mitchell Henry, and see its most famous feature, the miniature Cathedral. It has been home to the Irish order of Benedictine nuns since 1920.

Next, you will visit Dan O'Hara's Homestead. The Centre offers a unique insight into the history and heritage of this most beautiful part of Connemara and the West of Ireland. Here you will enjoy tea and scones.

Overnight stay in Galway at **Salthill Hotel** or similar.

Breakfast



Day **7**

## Galway Dublin

This morning, depart Galway for **Dublin City**.

On arrival, you will first explore the city's north side, which offers striking monuments such as the GPO (General Post Office) on O'Connell Street and Phoenix Park, Europe's largest city-based public park. The city's south side appears more sophisticated with its vast Georgian squares and is home to Trinity College, Dublin Castle and two Anglican Cathedrals. Visit EPIC, The Irish Emigration Museum. Over the centuries, over 10 million people emigrated from Ireland – at EPIC you can find out why they left, where they went and how they shaped the world. As you uncover the stories of our emigrants, you'll realise that emigration is not about what people leave behind but what they bring with them.

Overnight stay in Dublin at **Academy Plaza Hotel** or similar.

Breakfast



Day **8**

## Dublin

After a final Irish breakfast, transfer to Dublin Airport for your departure flight under own arrangements.

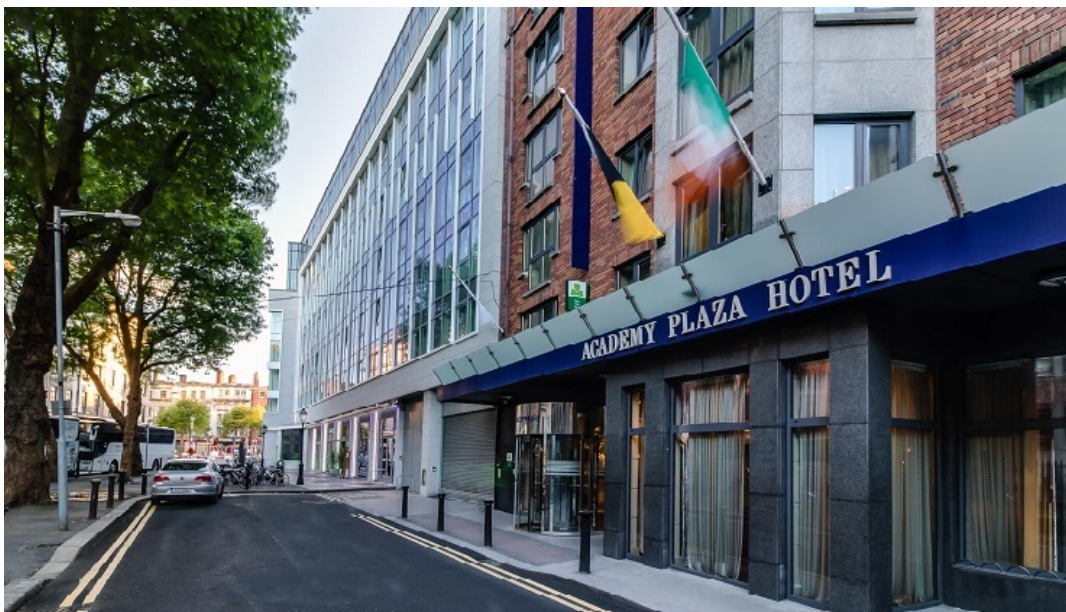
Breakfast

## ACCOMMODATION

### Academy Plaza Hotel

#### Dublin

Academy Plaza Hotel Dublin City offers a warm Irish welcome with friendly service, modern rooms, and great dining. Just steps from O'Connell Street and close to Dublin's top attractions, the hotel provides stylish comfort and convenience for a memorable stay in the city centre.



### Randles Hotel Killarnev

**Kerry**

Randles Hotel, a family-owned 4-star property in the heart of Killarney on the Wild Atlantic Way, offers genuine hospitality and a relaxed atmosphere since 1992. Guests can unwind by open fires or explore the beauty of Kerry, enjoying a blend of traditional charm and modern comfort. For the best rates, book directly on the hotel's website.



---

**Salthill Hotel**

**Galway**

Salthill Hotel, a 4-star retreat on Galway's stunning promenade, offers panoramic views of Galway Bay and the Clare Hills, just minutes from the city centre. Guests can enjoy stylish rooms, many with ocean views, along with a leisure centre featuring a pool, sauna, and steam room, a state-of-the-art gym, and two award-winning restaurants. With elegant event spaces, direct beach access, and convenient parking options, the hotel is ideal for romantic escapes, family breaks, business stays, or special celebrations—all within easy reach of Galway's top attractions and day-trip destinations.



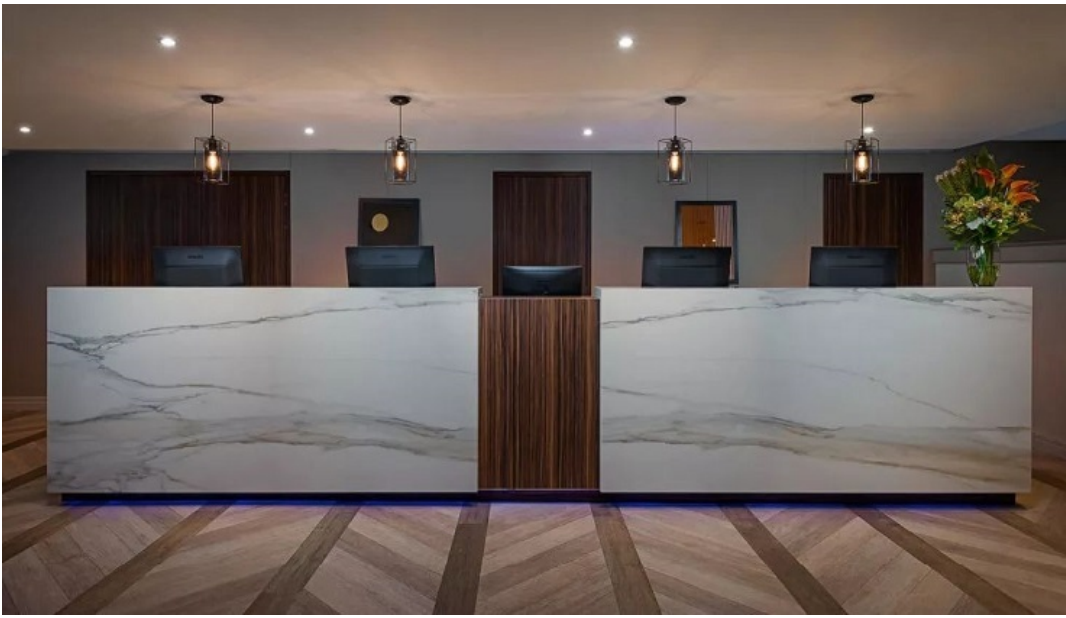
---

**The George Hotel**

**Limerick**

The George Hotel Limerick combines modern style with 4-star comfort in the heart of the city, offering 125 well-designed rooms with large beds, crisp duvets, flatscreen TVs, and free high-speed WiFi—everything you need for a relaxing and comfortable stay.





---

## ADDITIONAL INFORMATION

### Excluded

- International airfares and taxes
- Domestic airfares and taxes, unless otherwise specified in our holiday package
- Visa expenses, processing and issuance fees
- Meals other than as specified in our holiday package
- Travel Insurance or expenses of a personal nature (mini-bar, phone call, laundry, etc.),
- Tips or gratuities to guides, drivers, porters, hotel, restaurant or boat staff, etc.
- Or any other travel expense that has not been included in our holiday package

## IN PARTNERSHIP

